

## Technical Release Note R28-25

### LightSYS Air (868MHz)

### Ver. 3.4.4

|                         |                     |
|-------------------------|---------------------|
| <b>Date</b>             | November 19, 2025   |
| <b>Product Line</b>     | LightSYS Air 868MHz |
| <b>Distribution</b>     | RISCO Partners      |
| <b>Software Release</b> | V 3.4.4             |

#### System Details

- A. Version               **3.4.4.0003**
- B. Software Date 3/11/25
- C. Checksum            0xE69F
- D. Software label LightSYS Air-FscpV3.4.4.0003
- E. Additional main panel units  
     Boot Loader
  - Software version:    V02.02.01.0001
  - Date of software version: 12/08/24
  - Checksum of software version: 0x7209
- F. HW Version    1PC432MAV001G/F
- G. Languages - See Appendix A
- H. Defaults - See Appendix A
- I. Accessories

#### Accessories

| Module/Device                     | Version (Boot)      | Date            | Checksum      |
|-----------------------------------|---------------------|-----------------|---------------|
| <b>WL Video Expander (868MHz)</b> | <b>V2.41(V1.08)</b> | <b>15/08/25</b> | <b>0xA558</b> |
| GSM 2G/3G/4G (Gemalto)            | V1.84 (V0.10)       | 19/10/21        | 0x5605        |
| GSM 4G (Telit)                    | V0.56               | 18/03/25        | 0xACEC        |

#### Wireless Accessories (FOTA)

| Device                            | Version (Boot) | Date     | Checksum |
|-----------------------------------|----------------|----------|----------|
| <b>2- Way Repeater</b>            | V1.29 (1.03)   | 13/05/25 | 0x35F2   |
| <b>W/L Panda Keypad (For LS+)</b> | V1.22 (2.02)   | 14/11/24 | 0x4B24   |

## 1. Overview

RISCO is pleased to announce the release of LightSYS Air firmware version 3.4.4.

This version includes some enhancements and stability improvements.

## 2. Enhancements

2.1. Change defaults for customer IDs: OSP, OIT and IIT.

2.2. **RisControl** - During the synchronization process (downloading parameters), the RisControl also retrieves the zone status. This is designed to support the new Rule Condition feature on the RisControl (see RN R29-25, RisControl 1.9.0/2.7.0).

2.3. Support for retrieving Wi-Fi connection status while in programming mode. This enables the installer to verify that the Wi-Fi connection was successfully established while remaining in programming mode.

2.4. Support for MA PSTN impedance for Brazil and the USA markets.

2.5. Enhancements to panel stability addressing reset issues.

## 3. Bug fixes

|   | Description   |
|---|---|
| 1 | <b>GSM - Timer - GSM Network Loss:</b> The GSM Network Loss event is reported to the Monitoring Station immediately after the panel registers it, instead of after the timer expires.   |
| 2 | <b>Static IP Configuration - Cloud backup as Wi-Fi Channel - 'GPRS/IP' or 'IP Only' (LAN/Wi-Fi)</b> - Wi-Fi backup connection does not operate when a static IP address is configured, regardless of the selected connection channel. |
| 3 | Improved handling of remote upgrades for panels running very early firmware versions  |
| 4 | Zone bypassed (by the user) revert to <i>Unbypassed</i> after a prolonged power outage in which both mains and backup battery were depleted   |
| 5 | <b>Customer ID OSP</b> - MS Polling report code is incorrectly defined in the default settings, contrary to the required specifications.  |
| 6 | <b>Multi Technology detector (Slim Contact/shock) - CS</b> - 'Invalid Value' message occurs during sending Zone screen.   |

## 4. Special Notes

### 4.1. CS and IP Zone Connection via Wi-Fi

When the panel is connected to the network via Wi-Fi, it is not possible to connect both the CS and an IP Zone simultaneously.

### 4.2. Static IP Behavior

- If the panel is turned off while using an active Wi-Fi backup connection, and then turned on with LAN connected, the panel will operate with a dynamic IP address after the reset, even if a static IP was previously configured.
- Side effect: If an IP Zone was previously added to the panel, the connection between the panel and the IP Zone will be lost.

#### 4.3. Configuration Software Compatibility - CS version 5.3.0

4.4. LightSYS Air does not support PSTN module.

4.5. Wi-Fi

- 4.5.1. WEP Connection is not supported.
- 4.5.2. WPS connection with PIN Code is not support.
- 4.5.3. WPA / WPA2 enterprise security is not support
- 4.5.4. The WiFi module does not support 5GHz WiFi Network.

## 5. Upgrade Process

Remote upgrade can be performed by remote upgrade command from the Configurator, CCS, CS or keypad.  
Backup for the panel configuration must be done before such activity.

## Appendices

### Appendix A – Languages Table

| Language     | Ver.   | Language  | Ver.   |
|--------------|--------|-----------|--------|
| Chinese      | V18.00 | Hebrew    | V22.00 |
| Czech        | V20.00 | Hungarian | V19.00 |
| Danish       | V19.00 | Italian   | V23.00 |
| Dutch        | V22.00 | Polish    | V19.00 |
| English (AU) | V18.00 | PortugBR  | V20.00 |
| English (GT) | V06.00 | Russian   | V18.00 |
| English (IE) | V07.00 | Slovenian | V01.00 |
| English (UK) | V19.00 | Spanish   | V20.00 |
| English (US) | V20.00 | Thai      | V20.00 |
| French       | V20.00 | Hebrew    | V22.00 |
| German       | V20.00 | -         |        |

## Appendix B – Customer ID (Defaults) Table

| CID | Ver.  | CID | Ver.  |
|-----|-------|-----|-------|
| 0AU | V1.04 | 1IE | V1.00 |
| 0BR | V1.05 | 0IL | V1.07 |
| 0CN | V1.05 | 0IT | V1.07 |
| 0CZ | V1.05 | 1IT | V1.02 |
| 0DE | V1.05 | 0NL | V1.05 |
| 0DK | V1.05 | 0PL | V1.05 |
| 0EN | V1.05 | 0RU | V1.05 |
| 0FR | V1.06 | 0SP | V1.07 |
| 0GR | V1.05 | 0TH | V1.05 |
| 0GT | V1.02 | 0UK | V1.07 |
| 0HU | V1.05 | 0SL | V1.01 |
| 0IE | V1.06 | 1IE | V1.00 |

For any queries or additional information regarding this issue contact RISCO.

### Notice

This document contains *proprietary* and *confidential* material of Risco Group, Ltd. Any unauthorized reproduction, use, or disclosure of this material, or any part thereof, is strictly prohibited. This document is solely for the use of Risco Group, Ltd. employees and authorized Risco Group, Ltd. customers. The material furnished in this document is believed to be accurate and reliable. However, no responsibility is assumed Risco Group, Ltd. for the use of this material. Risco Group, Ltd. reserves the right to make changes to the material at any time and without notice.

Copyright © 2025 Risco Group, Ltd. All rights reserved.

Products and company names mentioned herein may be trademarks and/or registered trademarks of their respective companies.

## Technical Release Note R27-25

### LightSYS+ Ver. 3.4.4

|                         |                   |
|-------------------------|-------------------|
| <b>Date</b>             | November 19, 2025 |
| <b>Product Line</b>     | LightSYS+         |
| <b>Distribution</b>     | RISCO Partners    |
| <b>Software Release</b> | V 3.4.4           |

#### System Details

- A. Version               **3.4.4.0003**
- B. Software Date   03/11/25
- C. Checksum            0x4474
- D. Software label   LightSYSPlus-FscpV3.4.4.0003
- E. Additional main panel units  
Boot Loader
  - Software version:           V02.03.01.0001
  - Date of software version:   05/03/25
  - Checksum of software version:   0x96E8
- F. HW Version    1PC432MP0000B/C
- G. Languages - See Appendix A
- H. Defaults - See Appendix B
- I. Accessories

#### Bus Accessories

| Module/Device                             | Version<br>(Boot) | Date         | Checksum     |
|---|-------------------|--------------|--------------|
| W/L Expander (WMCP)                       | V1.51             | 05/02/25     | 0xFDE2       |
| W/L Video Expander (WVE)                  | V2.41(V1.08)      | 15/08/25     | 0xA558       |
| Panda Wired Keypad (PKPCP)                | V1.28             | 17/12/22     | 0x80C7/A     |
| Narrow Keypad (KPCP)                      | V0.76 (V4)        | 12/11/24     | 0xC7EA/<br>D |
| Elegant Keypad (ELKPCP) (ST<br>Processor) | V1.21 (V3.00)     | 22/09/2<br>4 | 0xA35B       |
| Elegant Keypad (ELKPCP) (GD<br>processor) | V1.22 (V5.00)     | 22/05/25     | 0x7525       |
| 8-ZE Old (1PC432EZ8000*)<br>(ZECp)        | V0.22 (V1)        | 10/12/18     | 0xE758       |
| 8-ZE New (1PC432EZ800*)<br>(ZECp)         | V1.14 (V1.04)     | 19/10/21     | 0xA956       |
| 16-ZE (ZECp16)                            | V1.14 (V1.04)     | 19/10/21     | 0xA956       |

|                               |               |          |        |
|-------------------------------|---------------|----------|--------|
| Voice Module (VMCP)           | V1.41 (V1.02) | 08/07/15 | 0x461D |
| GSM 2G/3G/4G (Gemalto)        | V1.84 (V0.10) | 19/10/21 | 0x5605 |
| GSM 4G (Telit)                | V0.56         | 18/03/25 | 0xACEC |
| Cellular On Bus module (COB)  | V0.08         | 27/06/19 | 0xA4B9 |
| Door Opener                   | V1.10 (V2)    | 31/10/22 | 0x633A |
| PSTN Plug-In module           | V1.03         | 04/01/23 | 0x6DDA |
| SMPS (3.5A Ext. Power Supply) | V1.09         | 26/06/23 | 0x8FDA |
| Utility Outputs (4 Outputs)   | V1.13         | 22/08/23 | 0x6F43 |

## FOTA Wireless Accessories

| Device                               | Version (Boot) | Date     | Checksum |
|--------------------------------------|----------------|----------|----------|
| 2- Way Repeater                      | V1.29 (1.03)   | 13/05/25 | 0x35F2   |
| W/L Panda Keypad (For LightSYS+/Air) | V1.22 (2.02)   | 14/11/24 | 0x4B24   |

## 1. Introduction

RISCO is pleased to announce the release of LightSYS+ firmware version 3.4.4.

This version includes some enhancements and stability improvements.

## 2. Enhancements

2.1. Change defaults for customer IDs: OSP, OIT and IIT.

2.2. **RisControl** – During the synchronization process (downloading parameters), the RisControl also retrieves the zone status. This is designed to support the new Rule Condition feature on the RisControl (see RN R29-25, RisControl 1.9.0/2.7.0).

2.3. Support for retrieving WiFi connection status while in programming mode. This enables the installer to verify that the WiFi connection was successfully established while remaining in programming mode.

2.4. Support for MA PSTN impedance for Brazil and the USA markets.

2.5. Enhancements to panel stability addressing reset issues.

### 3. Bug fixes

|   | Description   |
|---|---|
| 1 | <b>GSM – Timer – GSM Network Loss:</b> The GSM Network Loss event is reported to the Monitoring Station immediately after the panel registers it, instead of after the timer expires.   |
| 2 | <b>Static IP Configuration - Cloud backup as Wi-Fi Channel – ‘GPRS/IP’ or ‘IP Only’ (LAN/Wi-Fi)</b> - Wi-Fi backup connection does not operate when a static IP address is configured, regardless of the selected connection channel. |
| 3 | Improved handling of remote upgrades for panels running very early firmware versions  |
| 4 | Zone bypassed (by the user) revert to <i>Unbypassed</i> after a prolonged power outage in which both mains and backup battery were depleted   |
| 5 | <b>Customer ID OSP</b> – MS Polling report code is incorrectly defined in the default settings, contrary to the required specifications.  |
| 6 | <b>Multi Technology detector (Slim Contact/shock) – CS</b> – ‘Invalid Value’ message occurs during sending Zone screen.   |

### 4. Special Notes

#### 4.1. CS and IP Zone Connection via WiFi

- When the panel is connected to the network via WiFi, it is not possible to connect both the CS and an IP Zone simultaneously.

#### 4.2. Static IP Behavior

- If the panel is turned off while using an active WiFi backup connection, and then turned on with LAN connected, the panel will operate with a dynamic IP address after the reset, even if a static IP was previously configured.
- Side effect: If an IP Zone was previously added to the panel, the connection between the panel and the IP Zone will be lost.

#### 4.3. Configuration Software Compatibility – CS version 5.3.0.

#### 4.4. Arm and disarm panel via incoming call - Unable to Arm/Disarm partitions 9 and above (32) via voice module.

#### 4.5. Wi-Fi

- 4.5.1. No support for WEP Connection.
- 4.5.2. No support for WPS connection by PIN Code.
- 4.5.3. No support for WPA / WPA2 enterprise security
- 4.5.4. Max password chars are 31 (instead 32).
- 4.5.5. Max SSID name chars is are 31 (instead 32).
- 4.5.6. Max WIFI networks in scan are 20.
- 4.5.7. The WiFi module does NOT support 5GHz WiFi Networks
- 4.5.8. (only 2.4G support).

4.5.9. Cloud event history - IP network error and WiFi restore event appear in Cloud event history with LAN module - instead of WIFI module.

#### 4.6. **Wireless module**

4.6.1.WLKP2W - Unable to arm more than 3 partitions via W/L keypad even though the keypad is masked for all partitions. For example, if press on 3 then 2 and after that the arm key - will arm only partition 2 and not 32 as expected.

4.6.2. WL Module with Security Only: There is option to add repeater to WM Security Only, but the panel will not success to burn the repeater (FOTA) as there is no Video channel. Thus, images from PIR Camera will not be generated as well.

4.7. **Utility Output (UO)** PCB with DIP Switches – Panel will not upgrade this model of UO.

## 5. Upgrade Process

Remote upgrades can be performed from **firmware.riscogroup.com**. Backup for the panel configuration must be done before this upgrade.

## Appendices

### Appendix A – Languages Table

| Language     | Ver.   | Language  | Ver.   |
|--------------|--------|-----------|--------|
| Chinese      | V18.00 | Hebrew    | V22.00 |
| Czech        | V20.00 | Hungarian | V19.00 |
| Danish       | V19.00 | Italian   | V23.00 |
| Dutch        | V22.00 | Polish    | V19.00 |
| English (AU) | V18.00 | PortugBR  | V20.00 |
| English (GT) | V06.00 | Russian   | V18.00 |
| English (IE) | V07.00 | Slovenian | V01.00 |
| English (UK) | V19.00 | Spanish   | V20.00 |
| English (US) | V20.00 | Thai      | V20.00 |
| French       | V20.00 | Hebrew    | V22.00 |
| German       | V20.00 | -         |        |

## Appendix B – Customer ID (Defaults) Table

| CID | Ver.  | CID | Ver.  |
|-----|-------|-----|-------|
| 0AU | V1.04 | 1IE | V1.00 |
| 0BR | V1.05 | 0IL | V1.07 |
| 0CN | V1.05 | 0IT | V1.07 |
| 0CZ | V1.05 | 1IT | V1.02 |
| 0DE | V1.05 | 0NL | V1.05 |
| 0DK | V1.05 | 0PL | V1.05 |
| 0EN | V1.05 | 0RU | V1.05 |
| 0FR | V1.06 | 0SP | V1.07 |
| 0GR | V1.05 | 0TH | V1.05 |
| 0GT | V1.02 | 0UK | V1.07 |
| 0HU | V1.05 | 0SL | V1.01 |
| 0IE | V1.06 | 1IE | V1.00 |

For any queries or additional information regarding this issue contact RISCO.

### Notice

This document contains *proprietary* and *confidential* material of Risco Group, Ltd. Any unauthorized reproduction, use, or disclosure of this material, or any part thereof, is strictly prohibited. This document is solely for the use of Risco Group, Ltd. employees and authorized Risco Group, Ltd. customers.

The material furnished in this document is believed to be accurate and reliable. However, no responsibility is assumed Risco Group, Ltd. for the use of this material. Risco Group, Ltd. reserves the right to make changes to the material at any time and without notice.

Copyright © 2025 Risco Group, Ltd. All rights reserved.

Products and company names mentioned herein may be trademarks and/or registered trademarks of their respective companies.

## Technical Release Note R26-25

### Configuration Software 5.3.0

|                      |                        |
|----------------------|------------------------|
| <b>Date</b>          | November 13, 2025      |
| <b>Product Line</b>  | Configuration Software |
| <b>Distribution</b>  | RISCO Partners         |
| <b>Software Ver.</b> | 5.3.0                  |

## 1. Introduction

RISCO is pleased to announce the release of Configuration Software (CS) version 5.3.0. This update includes enhancements and new features to improve the functionality and user experience.

### **Version details**

**Software version:** 5.3.0.0006

**Software version date:** 22/10/2025

**Customer ID list:** See Appendix A

**CS GUI Languages:** See Appendix B

## 2 Changes and improvements

**2.1** The CS can now be launched by regular users (previously restricted to administrators).

### **2.2 LightSYS+ / LightSYS Air**

- 2.2.1 Support on the below two new UO updates that have been added in LightSYS+ 3.4.1 for the Follow Zone output (Alarm).
  - Follow All Zones: An alternative to the existing 'Up to 5 zones' option.
  - Pulse Output Retrigger: Output will be retriggered after the bell timeout.
- 2.2.2 Add support for Remote restart Panel via CS. (LightSYS+/Air 3.4.1).
- 2.2.3 Add support on 'Allow Arm with Tamper' (LightSYS+/Air 3.4.3).
- 2.2.4 In case Customer ID was not chosen to a panel ('---'), now the installer can select it via the CS.
- 2.2.5 Support the multi tech detector (Shock, Contact, Shock+Contact and Shock+Contact+2 Zone inputs).
- 2.2.6 Translation updates (all languages).

## 2.3 LightSYS+ Only

Add the following screens

- Bus Zone Expander
- Wireless Expander
- I/O expander

## 2.4 LightSYS Air Only

- 2.4.1 Support label up to 32 characters
- 2.4.2 Voice – Add support in Gender selection and volume adjustment (Voice Screen).
- 2.4.3 Remove the I/O expander screen
- 2.4.4 Status Screen – Add support on 'Voice Not Ready' indication.
- 2.4.5 'Audio' Screen renamed to 'Voice' screen

## 2.5 Agility4/Wicomm Pro Only

Update default for Customer ID '6FR'.

## 3 Bug fixes

|          | Description   |
|----------|---|
| <b>1</b> | LightSYS+ / Air - RRI - Remote Routine Maintenance Report fails due to Unhandled exception                    |
| <b>2</b> | LightSYS +/-Air – Multi-Tech detector – Additional parameters issue that causes for 'Invalid Value' messages. |

## Appendix A – Customer ID list

| LightSYS + /<br>LightSYS Air | LightSYS | ProSYS<br>Plus | Agility | Wicomm | Wicomm<br>Pro |
|------------------------------|----------|----------------|---------|--------|---------------|
| 0AU                          | 0AU      | 0AU            | 0AU     | 0AU    | 0AU           |
| 0BR                          | 0BR      | 0BR            | 0CN     | 0CN    | 0CN           |
| 0CN                          | 0CN      | 0CN            | 0CZ     | 0CZ    | 0CZ           |
| 0CZ                          | 0CZ      | 0CZ            | 0DE     | 0DE    | 0DE           |
| 0DE                          | 0DE      | 0DE            | 0DK     | 0DK    | 0DK           |
| 0DK                          | 0DK      | 0DK            | 0EN     | 0EN    | 0EN           |
| 0EN                          | 0EN      | 0EN            | 0FI     | 0FI    | 0FI           |
| 0FR                          | 0FR      | 0FR            | 0FR     | 0FR    | 0FR           |
| 0GR                          | 0GR      | 0GR            | 0IE     | 0IE    | 0IE           |
| 0GT                          | 0HU      | 0GT            | 0IL     | 0IL    | 0IL           |
| 0HU                          | 0IE      | 0HU            | 0IT     | 0IT    | 0IT           |
| 0IE                          | 0IL      | 0IE            | 0NL     | 0NL    | 0NL           |
| 0IL                          | 0IT      | 0IL            | 0NO     | 0NO    | 0NO           |
| 0IT                          | 0NL      | 0IT            | 0PL     | 0PL    | 0PL           |
| 0NL                          | 0PL      | 0NL            | 0PR     | 0PR    | 0PR           |
| 0PL                          | 0RU      | 0PL            | 0SE     | 0SE    | 0SE           |
| 0RU                          | 0SP      | 0RU            | 0SP     | 0SP    | 0SP           |
| 0SP                          | 0TH      | 0SP            | 0TH     | 0TH    | 0TH           |
| 0TH                          | 0UK      | 0TH            | 0UK     | 0UK    | 0UK           |
| 0UK                          | 1UK      | 0UK            | 1AU     | 1AU    | 1AU           |
|                              | 8CO      |                | 1DK     | 1DK    | 1DK           |
|                              | 8PR      |                | 1EN     | 1EN    | 1IE           |
|                              | 8SP      |                | 1FR     | 1IE    | 1NL           |
|                              |          |                | 1IE     | 1NL    | 1NO           |
|                              |          |                | 1IT     | 1NO    | 1NZ           |
|                              |          |                | 1NL     | 1NZ    | 1SE           |
|                              |          |                | 1NO     | 1SE    | 1SP           |
|                              |          |                | 1NZ     | 1SP    | 2DK           |
|                              |          |                | 1SE     | 2DK    | 2FR           |
|                              |          |                | 1SP     | 2FR    | 2NL           |
|                              |          |                | 2DK     | 2NL    | 2NO           |

| LightSYS + /<br>LightSYS Air | LightSYS | ProSYS<br>Plus | Agility | Wicomm | Wicomm<br>Pro |
|------------------------------|----------|----------------|---------|--------|---------------|
|                              |          |                | 2FR     | 2NO    | 2PL           |
|                              |          |                | 2NL     | 2PL    | 3DK           |
|                              |          |                | 2NO     | 3DK    | 3NL           |
|                              |          |                | 2PL     | 3NL    | 3SC           |
|                              |          |                | 2SP     | 3SC    | 4DK           |
|                              |          |                | 3SC     | 4DK    | 4FR           |
|                              |          |                | 4DK     | 4FR    | 8AR           |
|                              |          |                | 4FR     | 4NL    | 8BR           |
|                              |          |                | 4NL     | 5FR    | 8CL           |
|                              |          |                | 5FR     | 6NL    | 8CN           |
|                              |          |                | 5NL     | 7FR    | 8CO           |
|                              |          |                | 6FR     | 8AR    | 8IN           |
|                              |          |                | 6NL     | 8BR    | 8MX           |
|                              |          |                |         | 8CL    | 8PE           |
|                              |          |                |         | 8CN    | 8PR           |
|                              |          |                |         | 8CO    | 8PY           |
|                              |          |                |         | 8IN    | 8SP           |
|                              |          |                |         | 8MX    | 8UR           |
|                              |          |                |         | 8PE    |               |
|                              |          |                |         | 8PR    |               |
|                              |          |                |         | 8PY    |               |
|                              |          |                |         | 8SP    |               |
|                              |          |                |         | 8UR    |               |

## Appendix B – GUI Languages list

| LS Plus/LS Air | LightSYS   | Prosys Plus | Agility    | Wicomm     | Wicomm Pro |
|----------------|------------|-------------|------------|------------|------------|
| English US     | English US | English US  | English US | English US | English US |
| English UK     | English UK | English UK  | English UK | English UK | English UK |
| Czech          | Czech      | Czech       | Czech      | Czech      | Czech      |
| Danish         | Danish     | Danish      | Danish     | Danish     | Danish     |
| Spanish        | Spanish    | Spanish     | Spanish    | Spanish    | Spanish    |
| Finnish        | Finnish    | Finnish     | Finnish    | Finnish    | Finnish    |
| France         | France     | France      | France     | France     | France     |
| Hebrew         | Hebrew     | Hebrew      | Hebrew     | Hebrew     | Hebrew     |
| Italian        | Italian    | Italian     | Italian    | Italian    | Italian    |
| Dutch          | Dutch      | Dutch       | Dutch      | Dutch      | Dutch      |
| Norwegian      | Norwegian  | Norwegian   | Norwegian  | Norwegian  | Norwegian  |
| Polish         | Polish     | Polish      | Polish     | Polish     | Polish     |
| Portuguese     | Portuguese | Portuguese  | Portuguese | Portuguese | Portuguese |
| Russian        | Russian    | Russian     | Russian    | Russian    | Russian    |
| Swedish        | Swedish    | Swedish     | Swedish    | Swedish    | Swedish    |
| Chinese        | Chinese    | Chinese     | Chinese    | Chinese    | Chinese    |
| Germany        | Germany    | Germany     | Germany    | Germany    | Germany    |
| Greek          | Greek      | Greek       | X          | X          | Greek      |

For any queries or additional information regarding this issue contact **RISCO** Support.

### Notice

This document contains *proprietary* and *confidential* material of Risco Group, Ltd. Any unauthorized reproduction, use, or disclosure of this material, or any part thereof, is strictly prohibited. This document is solely for the use of Risco Group, Ltd. employees and authorized Risco Group, Ltd. customers.

The material furnished in this document is believed to be accurate and reliable. However, no responsibility is assumed Risco Group, Ltd. for the use of this material. Risco Group, Ltd. reserves the right to make changes to the material at any time and without notice.

Copyright © 2025 Risco Group, Ltd. All rights reserved.

Products and company names mentioned herein may be trademarks and/or registered trademarks of their respective companies.



## Technical Release Note – R30-25 HandyApp Ver. 3.11.0

|                         |   |
|-------------------------|---|
| <b>Date</b>             | December 9, 2025  |
| <b>Product Line</b>     | HandyApp – Mobile application for professional installers |
| <b>Application Ver.</b> | 3.11.0  |

### 1. Introduction

RISCO Group announces the release of HandyApp version 3.11.0.  
The update is already available to all HandyApp users in the App Stores.

### 2. Version Details

#### IOS

- Version: 3.11.0.0010
- Software Date: 27/11/25

#### Android

- Version: 3.11.0.0010
- Software Date: 30/11/25

### 3. Languages

The HandyApp is available in the following languages:

- English
- Spanish
- French
- Italian
- German
- Polish
- Dutch
- Portuguese
- Hebrew
- Czech
- Slovak

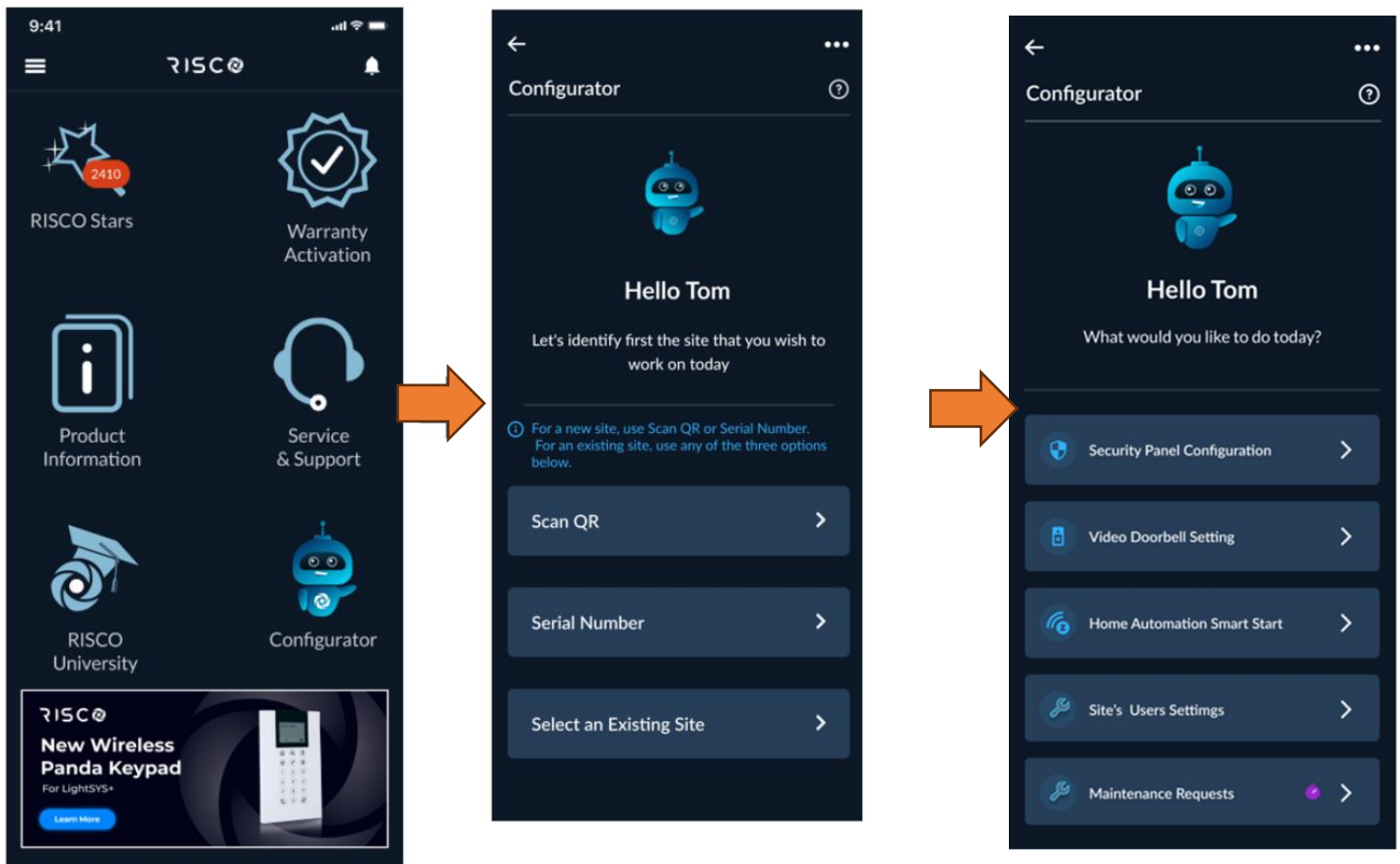
## 4. New Features and Improvement

### 4.1. Configurator: Updated Configurator Entry Flow

To support additional device types and future features, the entry flow to the HandyApp Configurator has been redesigned.

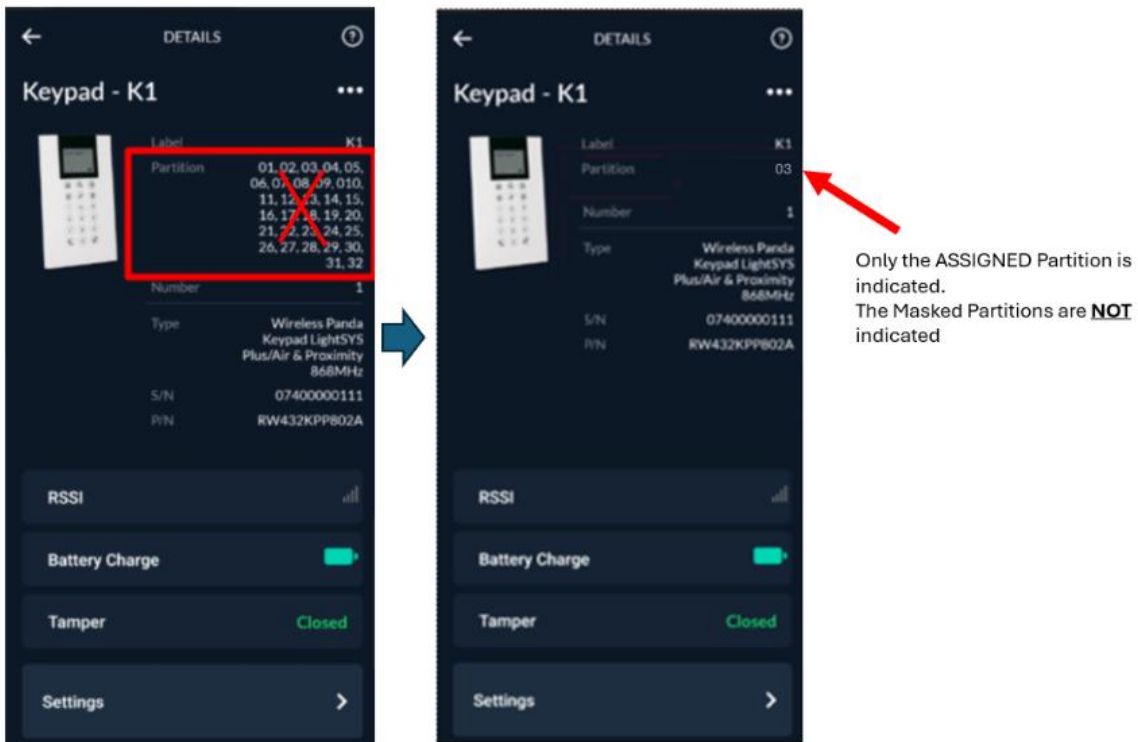
- When entering the Configurator, installers now begin with site identification.  
They can select an existing site or identify a new one by scanning a QR code or entering a serial number.
- After the site is identified, the installer is presented with a new screen allowing them to choose what they want to configure for that site (e.g., Security Panel, Video Doorbell).  
Only features supported for that site are shown.  
(Note: Future/upcoming features such as Users and Home Automation will remain hidden until released).
- Scanning a product that is not yet part of any site (a “floating” product) prompts the installer to either add it to an existing site or create a new site (same as it was in the previous HandyApp versions).
- Help screens for “Where is the QR label?” now support multiple product categories (Panels, Cameras, NVRs, VDBs, etc.) and are shown according to the selected product type.

**Note:** Existing configuration flows (Panel Programming, VDB setup) remain unchanged; only the initial entry and selection steps have been updated.

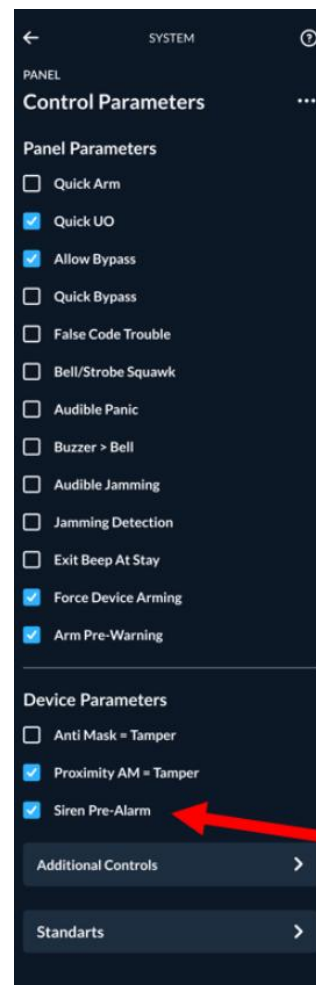




## 4.2. Configurator: Indicate only the assigned Partition in the Keypad Details Screen but not the masked partitions.



## 4.3. Configurator: Add "Siren Pre-Alarm" selection (LightSYS Air).





## 5. OS versions support

- iPhone OS ver. **17** and above.
- Android OS ver. **9** and above.

**For any queries or additional information regarding this issue contact RISCO Support.**

**Notice**

This document contains *proprietary* and *confidential* material of Risco Group, Ltd. Any unauthorized reproduction, use, or disclosure of this material, or any part thereof, is strictly prohibited. This document is solely for the use of Risco Group, Ltd employees and authorized Risco Group, Ltd. customers.

The material furnished in this document is believed to be accurate and reliable. However, no responsibility is assumed Risco Group, Ltd. for the use of this material. Risco Group, Ltd. reserves the right to make changes to the material at any time and without notice. Copyright © 2025 Risco Group, Ltd. All rights reserved. Products and company names mentioned herein may be trademarks and/or registered respective companies.

## Technical Release Note – R31-25 RISCO Cloud Ver. 6.6.0 (Build 0049)

|                  |                    |
|------------------|--------------------|
| <b>Date</b>      | December 11, 2025  |
| <b>Product</b>   | RISCO Cloud        |
| <b>Component</b> | RISCO Cloud Server |
| <b>Version</b>   | 6.6.0 (Build 0049) |

### 1. Introduction

RISCO Group is pleased to announce the release of RISCO Cloud software ver. 6.6.0 (Build 49), introducing several enhancements and changes.

### 2. Enhancements and Changes

#### 2.1 Vupoint - Device offline alerts

Device offline alerts will no longer be sent as *Critical* notifications in the iRISCO/FreeControl apps.

#### 2.2 VUPoint - New Video Home Page: Add Device - Simplified Error Messages

Error messages during device addition have been streamlined to improve clarity for installers:

- Camera polling to the cloud but wrong device type selected → **“Wrong Device Type Selected”**
- Camera not polling to the cloud → **“Device is Offline”**
- Camera polling to the cloud but already added to another site → **“Device is already added to another site”**
- Camera polling to the cloud but already exists in the current site → **“Device already exists in this site”**
- Camera polling to the cloud but exists in another company's product list → **“Device already exists in another company's product list”**

#### 2.3 RisControl - Rule Editing Improvements

Enhancements were made to simplify and improve the editing and deletion of rule steps (Rule Details, Triggers, Conditions, and Actions), both during rule creation and for existing rules.

#### 2.4 Correct Linking of End Users to Branded Apps

End users belonging to companies with a branded mobile app were previously directed to the iRISCO app when completing cloud registration.

This behavior has been corrected:

- After completing the registration process, end users are now redirected to the appropriate branded app in the App Store/Google Play.

- Links will no longer point to the iRISCO or FreeControl apps when a branded app exists.

## **2.5 Subscription Management - Improved Handling for Non-Reseller Sites**

For sites billed directly to end users (Non-Reseller sites), subscription management has been redesigned to make the process clearer and easier for both installers and customers.

Subscriptions will now be charged directly by RISCO, without using the app-store (Apple/Google) subscription mechanisms.

This new method applies only to new sites in specific regions.

Existing sites with active app-store subscriptions will not be affected by these changes.

For any queries or additional information regarding this release, contact RISCO Support.

### **Notice**

This document contains *proprietary* and *confidential* material of RISCO Group, Ltd. Any unauthorized reproduction, use, or disclosure of this material, or any part thereof, is strictly prohibited. This document is solely for the use of RISCO Group, Ltd employees and authorized RISCO Group, Ltd. customers.

The material furnished in this document is believed to be accurate and reliable. However, no responsibility is assumed RISCO Group, Ltd. for the use of this material. RISCO Group, Ltd. reserves the right to make changes to the material at any time and without notice. Copyright © 2025 RISCO Group,

Ltd. All rights reserved. Products and company names mentioned herein may be trademarks and/or registered respective companies.

## Technical Release Note – R29-25

### RisControl 1.9.0 & RisControl + SmartHome 2.7.0



|                  |  |
|------------------|--|
| <b>Date</b>      | December 2, 2025   |
| <b>Component</b> | RisControl Keypad  |
| <b>P/N</b>       | RP432KPT (RisControl)<br>RP432KPTZ (RisControl + Smart Home) |

## 1. Introduction

RISCO Group is pleased to announce the release of a new software version for RisControl and RisControl + Smart Home keypads, introducing several enhancements and changes.

## 2. Version Details

### 2.1 RisControl (RP432KPT)

Software Version: 1.9.0.0010

### 2.2 RisControl + Smart Home (RP432KPTZ)

Software Version: 2.7.0.0021

### 2.3 Update Manager

Software Version: 1.5.0.0003

## 3. Enhancements and Changes

**3.1 Rule Icon** – Expanded the available icon selection for Rules and added new filtering options, including a “Category” filter and a Search function, making it easier to find the desired icon.

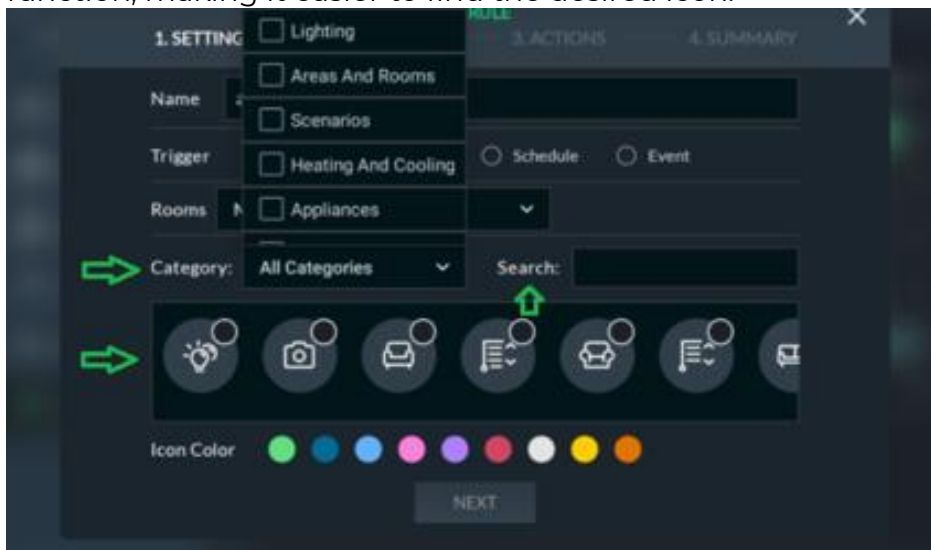


Image 1

### 3.2 Support for Multiple Events When Triggering a Rule

Added support for advanced rule creation using multiple triggering events, including:

- Ability to add up to 10 Triggers (OR) to a Rule
- Ability to add up to 10 Conditions (AND) to a Rule

#### **Notes:**

- *These advanced rule configurations can only be created via the Installer Cloud. In RisControl, the rule-creation options remain unchanged.*
- *Rules that include conditions or more than one trigger cannot be modified via RisControl.  
(When a user attempts to edit such a rule, the following message is displayed: "This is a complex Rule created by the Installer and may not be edited. Please contact your installer for any required changes or alternatively disable or delete the rule.")*
- *A rule cannot be edited in RisControl (and will show the pop-up message) if any of the following apply:*
  - *The rule has more than one trigger*
  - *The rule includes at least one condition*
  - *The rule includes more than one schedule*

### 3.3 Support for "AND" Conditions in Rule Creation

Added support for defining Conditions within a Rule; The rule will be triggered only when all defined conditions are true.

Conditions can be configured exclusively when creating the rule via the Installer Cloud.

### 3.4 Add Icon Image and Color to Smart Home Devices

Added the ability to select a custom icon and color for supported smart home devices.

These customizations are visible in both the Installer Cloud and the iRISCO app.

This change can be applied only through the installer Cloud and for specific device types: SWITCH\_BINARY\_SET null (devices without actions, such as sensors).

This update does not affect the device display in RisControl.

RisControl will continue to show device icons using the existing default design.

## 4. Upgrade Process

Keypad upgrade can be done via the path below:

From the Riscontrol keypad: System Settings → General → System Information → RisControl SW Version: 'Check for Update'

For any queries or additional information regarding this issue contact **RISCO Support**.

### **Notice**

This document contains *proprietary* and *confidential* material of RISCO Group, Ltd. Any unauthorized reproduction, use, or disclosure of this material, or any part thereof, is strictly prohibited. This document is solely for the use of RISCO Group, Ltd employees and authorized RISCO Group, Ltd. customers.

The material furnished in this document is believed to be accurate and reliable. However, no responsibility is assumed RISCO Group, Ltd. for the use of this material. RISCO Group, Ltd. reserves the right to make changes to the material at any time and without notice. Copyright © 2025 RISCO Group, Ltd. All rights reserved. Products and company names mentioned herein may be trademarks and/or registered respective companies.

## Technical Release Note – R23-25 Video Doorbell 4.4.0.55

|                  |  |
|------------------|--|
| <b>Date</b>      | October 23, 2025                               |
| <b>Component</b> | RISCO Video Doorbell DP-D2LR                   |
| <b>P/N</b>       | RVDBA701000A (868MHz)<br>RVDBA701009A (916MHz) |
| <b>Version</b>   | 4.4.0.55 (15/10/2025)                          |



### 1. Introduction

RISCO Group is pleased to announce the release of a new software version for the Video Doorbell, introducing an enhancement.

### 2. Enhancement

- Added support for automatic time adjustment during Daylight Saving Time (DST).

### 3. Upgrade Process

Video Doorbell upgrade can be done by the **end-user** via iRISCO (VDB settings), by pressing on the Update button.

For any queries or additional information regarding this issue contact **RISCO Support**.

#### Notice

This document contains *proprietary* and *confidential* material of RISCO Group, Ltd. Any unauthorized reproduction, use, or disclosure of this material, or any part thereof, is strictly prohibited. This document is solely for the use of RISCO Group, Ltd employees and authorized RISCO Group, Ltd. customers.

The material furnished in this document is believed to be accurate and reliable. However, no responsibility is assumed RISCO Group, Ltd. for the use of this material. RISCO Group, Ltd. reserves the right to make changes to the material at any time and without notice. Copyright © 2025 RISCO Group, Ltd. All rights reserved. Products and company names mentioned herein may be trademarks and/or registered respective companies.

## Technical Release Note - R25-24

### Wicomm Pro / Agility4 Ver. 5.85

|                         |                       |
|-------------------------|-----------------------|
| <b>Date</b>             | December 3 ,2025      |
| <b>Product Line</b>     | Wicomm Pro & Agility4 |
| <b>Distribution</b>     | RISCO Partners        |
| <b>Software Release</b> | V 5.85                |

#### System Details

- A. Version                      5.85
- B. Checksum                 0xC414
- C. Software label         One\_FW\_CPCP\_ V5.85\_10\_08\_25
- D. Hardware
  - 1PC132MANT00D. (Agility4)
  - 1PC332M00000C. (WiComm Pro)
- E. Defaults and Languages – See Appendix A
- F. Modules and accessories version

| Module/Device   | Version           | Checksum   |
|---|-------------------|------------|
| Boot Loader   | 2.16              | 0x9603     |
| GSM 2G/3G/4G (Gemalto modem)                                  | 1.84              | 0x5605     |
| GSM 2G/4G (Telit modem)                                       | <b>0.44</b>       | 0xC0CB     |
| IPC2  | 0.59              | 0x77BC     |
| IPC3 ('Giga Device' processor)                                | 1.05              | 0x0240     |
| DTR External Flash  | <b>3.17</b>       | 0xC91C     |
| DTR   | 3.12              | 0xBA0F     |
| Altera (Agility)  | 61                | -          |
| RF Stamp 868MHz / 433MHz (Security & Video)                   | 1.71              | 0x001AF1C8 |
| RF Stamp 915MHz (Security & Video)                            | 1.29              | 0x001B2F7E |
| Agility W/L Keypad (Silicon lab RF head)<br>(RW132KPPW30B)    | 5.07              | 0x9E3B     |
| Agility W/L Keypad DB (Silicon Lab RF head)<br>(RW132KPPW30B) | 208               | 0x1EAB     |
| PIC 64K WiComm Pro  | <b>4.25</b>       | 0x3E60     |
| PIC 64K Agility   | 3.31<br>Boot_3.01 | 0x5AF9     |
| Panda WL Keypad 2W – F/W                                      | 2.44              | 0xED7E     |
| Panda WL Keypad 2W - <u>DB</u>                                | 334               | 0x5A2A     |
| Repeater 2-Way  | 1.17              | 0x3E0D     |

## 1. Introduction

RISCO Group has released a maintenance firmware version for Wicomm Pro & Agility4 with two improvements.

## 2. Changes

### 2.1 Backup Battery - Low Battery Indication Adjustment

The threshold voltage for the *Low Battery* report has been optimized so that the low battery event is triggered closer to the actual battery depletion point - approximately one hour before the battery is fully discharged, instead of about four hours earlier as before.

### 2.2 Two-Way Keyfob Communication - Security Enhancement

Added an authentication process for messages from two-way keyfobs.

## 3. Bug fixes

## 4. Upgrade Process

The upgrade firmware can be performed via the remote upgrade server of RISCO.

Backup for the panel configuration must be done before this upgrade.

## Appendix A – Default and Languages

| Customer ID   | Default Text Language | Customer ID      | Default Text Language |
|---|-----------------------|------------------|-----------------------|
| 0EU,0EN, 3SC, 0BL, 0FL, 0TR, 0RU, 0HU, 0NX, 1NZ, 8CN, 1EN | En                    | 0AR              | AR                    |
| SFI, 0FI  | Fi                    | 0BR              | BR                    |
| 0IT,1IT   | IT                    | 0PR, 8BR, 8PR    | PR                    |
| 0IE, 0UK, 1UK, 8IN, 1IE                                   | UK                    | 1DK              | DK_1                  |
| 0SP, 2SP, 8SP, 8PE, 8AR, 8CL, 8UR, 8CO, 8PY, 8MX          | SP                    | 0DK,2DK,3DK, 4DK | DK                    |
| 0FR,1FR, 2FR, 3FR 4FR,5FR,6FR, 7FR                        | FR                    | 0NO, 1NO         | NO                    |
| 0SE   | SE                    | 2NO              | NO_1                  |

|   |      |                 |        |
|---|------|-----------------|--------|
| <b>1SE</b>                                | SE_1 | <b>OCN</b>      | EN(CH) |
| <b>0NL,1NL ,2NL,3NL,<br/>4NL, 5NL,6NL</b> | NL   | <b>OTH</b>      | EN(TH) |
| <b>0CZ</b>                                | CZ   | <b>0AU, 1AU</b> | EN(AU) |
| <b>0DE</b>                                | DE   | <b>1SP</b>      | CA     |
| <b>0PL, 2PL</b>                           | PL   | <b>0IL</b>      | HEB    |

For any queries or additional information regarding this issue contact **RISCO** support.

#### **Notice**

This document contains *proprietary* and *confidential* material of Risco Group, Ltd. Any unauthorized reproduction, use, or disclosure of this material, or any part thereof, is strictly prohibited. This document is solely for the use of Risco Group, Ltd. employees and authorized Risco Group, Ltd. customers.

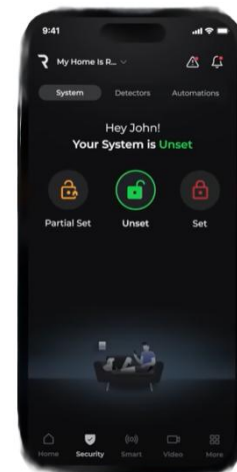
The material furnished in this document is believed to be accurate and reliable. However, no responsibility is assumed Risco Group, Ltd. for the use of this material. Risco Group, Ltd. reserves the right to make changes to the material at any time and without notice.

Copyright © 2025 Risco Group, Ltd. All rights reserved.

Products and company names mentioned herein may be trademarks and/or registered trademarks of their respective companies.

## Technical Release Note (R20-25) iRISCO ver. 6.0.2

|                         |                              |
|-------------------------|------------------------------|
| <b>Date</b>             | September 30, 2025           |
| <b>Product Line</b>     | iRISCO App for iOS & Android |
| <b>Application Ver.</b> | V6.0.2                       |



### 1. General Details

#### 1.1. Software version 6.0.2.0006

#### 1.2. Languages

|   |   |   |   |
|---|---|---|---|
| <ul style="list-style-type: none"> <li>English (US)</li> <li>Hebrew</li> <li>Czech</li> <li>German</li> <li>English (UK)</li> </ul> | <ul style="list-style-type: none"> <li>Spanish</li> <li>French</li> <li>Italian</li> <li>Dutch</li> <li>Thai</li> </ul> | <ul style="list-style-type: none"> <li>Chinese</li> <li>Polish</li> <li>Danish</li> <li>Slovak</li> <li>Portuguese</li> </ul> | <ul style="list-style-type: none"> <li>Greek</li> <li>Global English</li> </ul> |
|---|---|---|---|

### 2. Introduction

RISCO Group has launched a new version of iRISCO for iOS and Android, introducing enhancements and bug fixes. This version will gradually become available in app stores during the next coming days.

### 3. Changes and enhancements

#### 3.1 Panic Button Support

*For more details, see Appendix A*

#### 3.2 PIN code

After launching the app, users will be required to enter their PIN code when performing an action (e.g., arm/disarm). If more than 5 minutes have passed since the last action, the PIN code will be requested again..

#### 3.3 Bug fixes

### 4. OS versions support

- iOS ver. 17 and above.
- Android OS ver. 8 and above

## Appendices

### Appendix A – Panic Button Support

The panic button works similarly to previous iRISCO (5):

1. **Setup:** The installer enables the panic button in global (company) and site settings. The user will then see the panic button icon at the top of any screen of the app - See figure 1.

Pressing on this top icon will open the Panic Mode screen, as shown in figure 2.

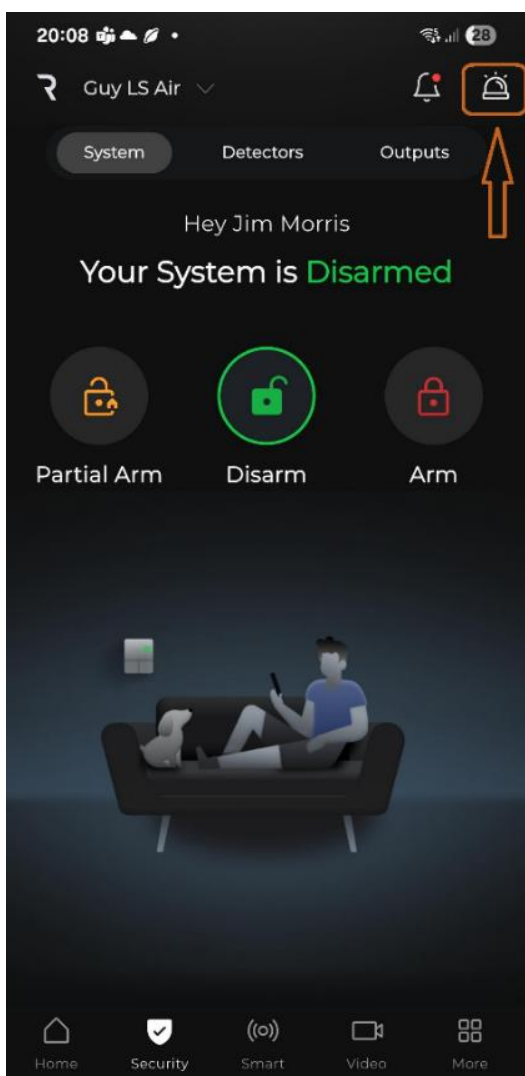


Figure 2

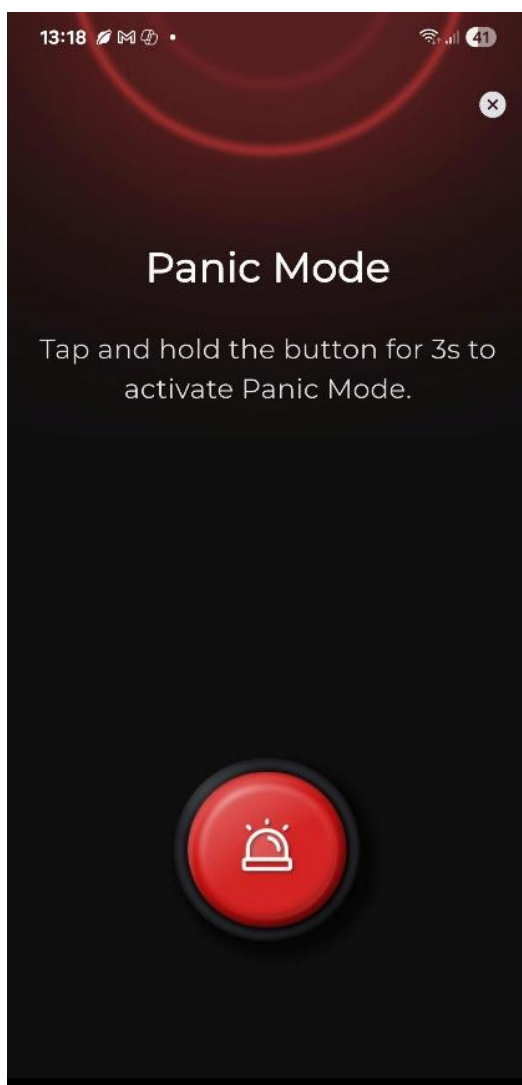


Figure 2

2. **Activation:** Press and hold this panic button for 3 seconds.

A popup allows the user to:

- Activate Now
- Schedule Activation (set minutes and seconds)

See figure 3.

After scheduling, the popup closes and the user returns to the home page.

3. **Countdown Widget:**

- Appears on all pages with the top navigation bar
- Shows time remaining until activation
- Tap **“Tap to deactivate”** to stop the countdown and hide the widget
- A 30-second pre-alert notification will appear
- (only if the countdown is one minute or longer).

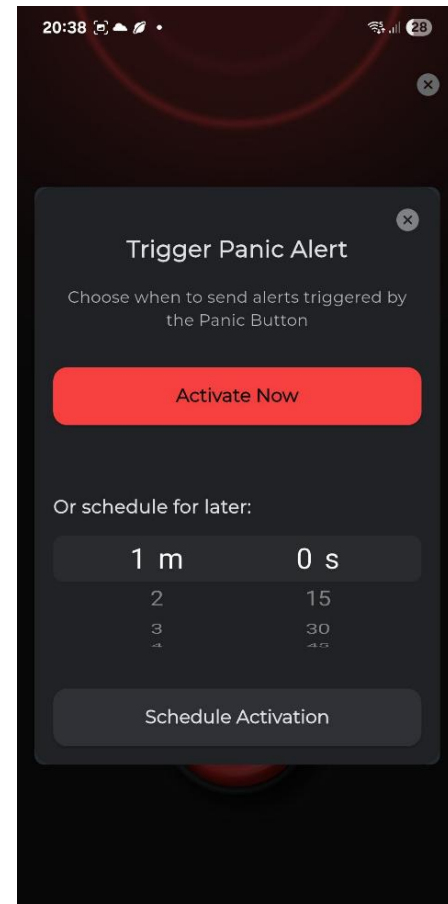


Figure 3

4. **Panic Activation:**

- When countdown ends, the widget disappears and the panic is activated
- Push notifications are sent to the monitoring station and all users on site

**Note:** User location support will be added in future iRISCO versions

For any queries or additional information regarding this issue contact RISCO Service Group.

**Notice**

This document contains *proprietary* and *confidential* material of RISCO Group, Ltd. Any unauthorized reproduction, use, or disclosure of this material, or any part thereof, is strictly prohibited. This document is solely for the use of RISCO Group, Ltd employees and authorized RISCO Group, Ltd. customers. The material furnished in this document is believed to be accurate and reliable. However, no responsibility is assumed RISCO Group, Ltd. for the use of this material. RISCO Group, Ltd. reserves the right to make changes to the material at any time and without notice. Copyright © 2025 RISCO Group, Ltd. All rights reserved. Products and company names mentioned herein may be trademarks and/or registered respective companies.